

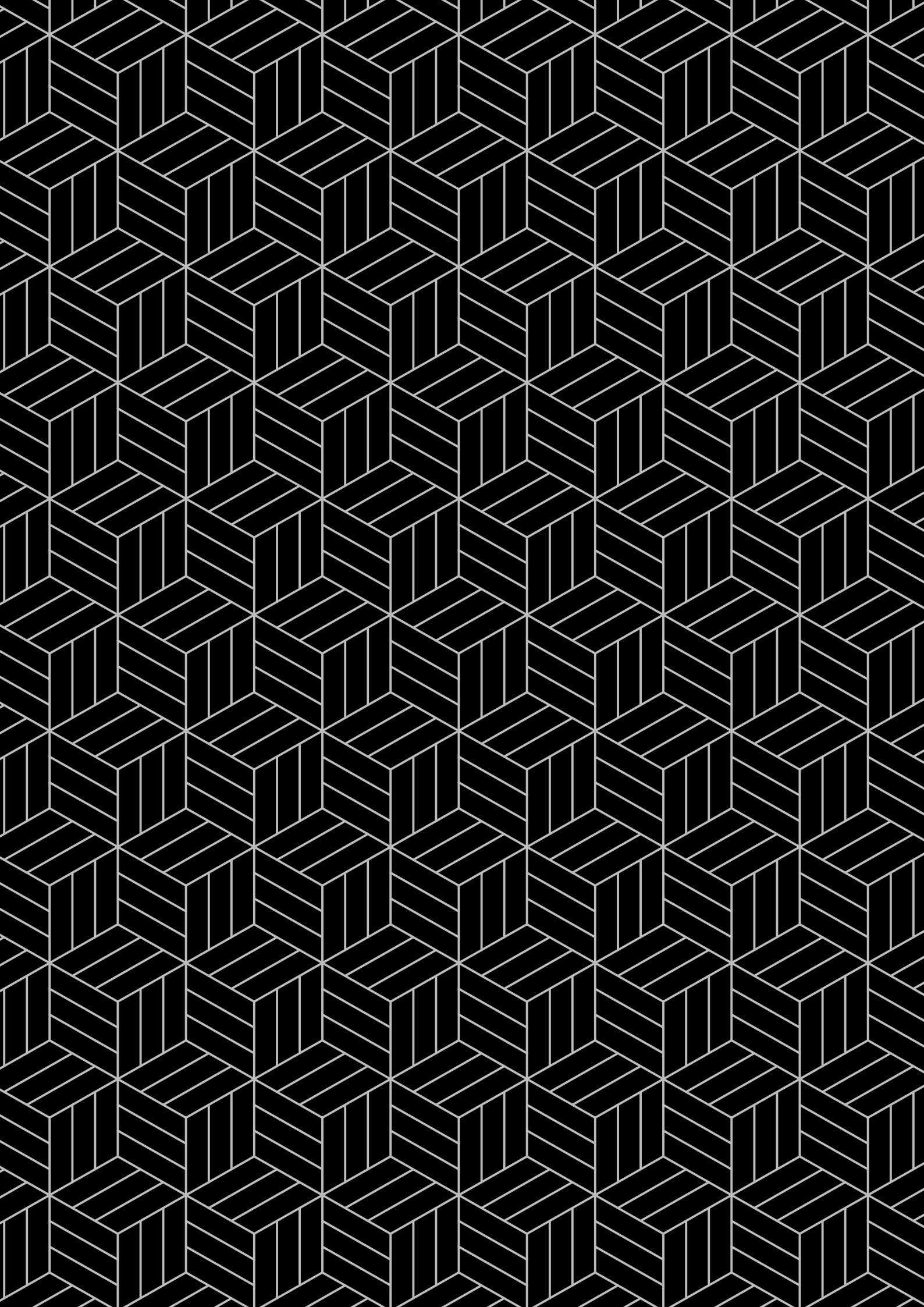


LONGO PALMARINI ARCHITECTURE & PARTNERS

LPO

— LONGO PALMARINI ARCHITECTURE & PARTNERS





- 1** | CORE COMPETENCES
- 2** | TEAM STRUCTURE
- 3** | BEST PRACTICES
- 4** | PROJECTS
- 5** | PUBLICATIONS
- 6** | CONTACTS AND CERTIFICATIONS



## Company Profile

**Longo Palmarini Architecture & Partners** or **LPArchitecture** is the result of a *spin off* undertaken at the end of 2010 from Studio A Architecture and Design which was founded in 1999 by two Italian architects – **Giovanni Longo, Alessandro Palmarini** and other two partners.

For clarity's sake, due to the above - mentioned spin off, most of the contents showcased in this new company profile have been realized in the former company and will act as platform for **LPArchitecture**.

A decade of steady growth has seen the Milan-based outfit firmly establish itself in the design field, specializing in turnkey projects that range from residential to hotels, in both private and commercial sectors.

With a ten-strong staff now covering various design specialisms, **LPArchitecture** offers what amounts to a 'one-stop shop' for its clients, constantly upgrading its services in order to be able to act both as the client's representative and surveyor, as well as project manager. Great emphasis is placed on using Italy's world-renowned strengths in high-quality interior craftsmanship.

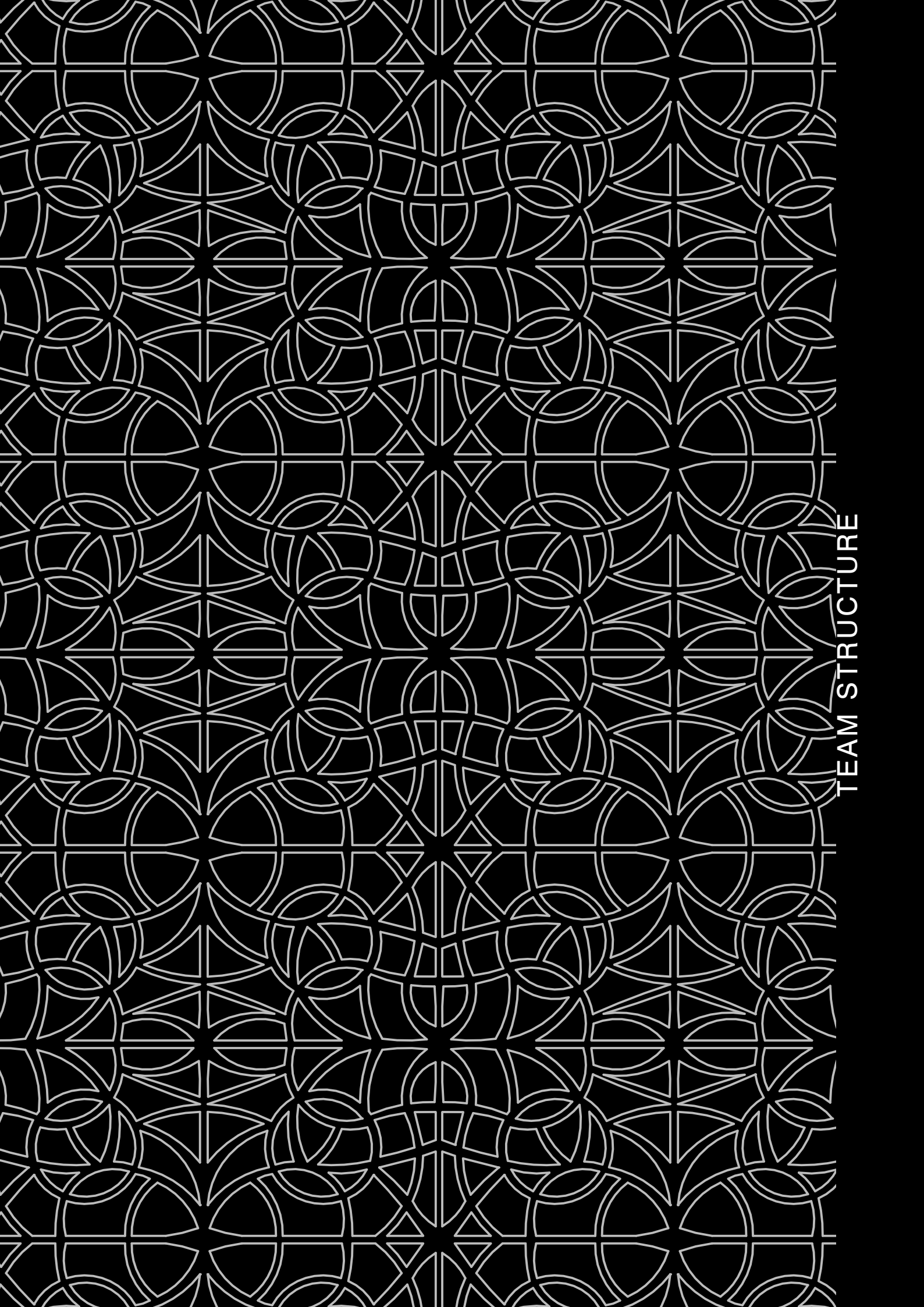
**LPArchitecture's** success – see the enclosed client list – is based upon its simple but highly effective approach: understand and interpret.

Its designers gain an intimate knowledge and understanding of what each individual client desires, then realise that idea by interpreting it architecturally in order to provide a sense of place, and comfort, then adding a sense of drama and theatre – producing a stage upon which the clients themselves are both actor and audience.

Utilising its varied experience, plus classic Italian flair and style, **LPArchitecture** designers combine architectural aesthetics with practicality. The aim is always to satisfy the particular needs of each individual client, be they private or corporate. But crucially, everything is done within the watchwords of 'budget' and 'timeframe'.

**LPArchitecture's** knowledge of interior design and architecture at an international level, plus its expertise in new technologies, enables its designers to work within a framework of efficiency in order to provide best value for money.

**LPArchitecture** has already successfully partnered some of the major players in both the High Luxury Hotel, and Residential fields, both in Italy and abroad.



TEAM STRUCTURE

----- **LEADING DESIGN EXECUTIVES / FOUNDERS**

Giovanni Longo |  
Alessandro Palmarini |

----- **CONCEPT DESIGN MANAGER**

Fabio Bozzetti |

----- **PROJECT MANAGERS**

Lisa Bosi |  
Alberto Facchetti |  
Silvia Lattanzi |  
Silvia Puglisi |

----- **PROJECT OFFICERS**

Andrea Messina |  
Maria Ritrovato |  
Pier Fedrico Ferrario |





BEST PRACTICES

**/ CONCEPT DESIGN**

establish and strengthen the relationship with all the players involved  
brainstorming & preliminary workshop  
feasibility analysis  
preliminary concept  
concept presentation

**// SCHEMATIC DESIGN**

space planning  
facilities requirements  
models  
schematic plan, section drawings  
overall visual character

**/// DESIGN DEVELOPMENT**

mock-up  
floor plans, elevations and sections  
interior landscaping drawings  
sample boards  
FF&E schedules

**//// CONSTRUCTION STAGE**

final drawings  
working drawings & full details  
FF&E detailed schedules - overall  
colour&finishes schedules for special items  
specifications matrix  
assist the client's consultant (i.e. Project Manager) to prepare budget/bill of quantities

**///// TENDER DOCUMENTATION**

assist the client's consultant with tender's preparation  
supervision

**///// SUPERVISION STAGE**

review and approve of shop drawings  
supervision and quality control  
assist the client's consultant to prepare reports  
assist the client's consultant in inspections  
submit final report

### BAIE MARQUET RESIDENTIAL BUILDING CAP D'AIL - NICE (FRANCE)

- TYPE OF PROJECT  
new development
- SIZE DATA  
5000 sqm, 27 apartments, 5 storeys + 4 basement
- SPECIAL FEATURES  
fit out and part ff&e + building automation + lighting design
- CLIENT  
PIZZAROTTI COTE D'AZUR – ENGECO
- SERVICES  
turnkey architectural + interior design project as per **LPArchitecture** best practices





**BAIE MARQUET RESIDENTIAL BUILDING  
CAP D'AIL - NICE (FRANCE)**





### PARC DU CAP RESIDENTIAL DEVELOPMENT CAP D'ANTIBES (FRANCE)

- TYPE OF PROJECT  
luxury residential
- SIZE DATA  
90 apt - 14.000 sqm
- SPECIAL FEATURES  
high end construction standards - architectural
- CLIENT  
Le Provencal Investments SA
- SERVICES  
turnkey interior design project as per **LPArchitecture** best practices





© Longo Palmarini Architecture & partners\_all rights reserved



© Longo Palmarini Architecture & partners\_all rights reserved



© Longo Palmarini Architecture & partners\_all rights reserved



### RESIDENTIAL BUILDING PAULLO (ITALY)

- TYPE OF PROJECT  
residential condo
- SIZE DATA  
1000 sqm – 8 apartments + retails
- SPECIAL FEATURES  
building automation, low energy consumption
- CLIENT  
DANTE Srl
- SERVICES  
turnkey architectural + interior design project as per **LPArchitecture** best practices



### VILLA LINDI

### PARC CAMILLE AMELIE CANNES (FRANCE)

- TYPE OF PROJECT  
luxury residential
- SIZE DATA  
Villa 550 sqm + landscaped garden 2000 sqm
- SPECIAL FEATURES  
high end construction standards - fit out + FF&E
- CLIENT  
private
- SERVICES  
turnkey interior design project as per **LPArchitecture** best practices





© Longo Palmarini Architecture & partners\_all rights reserved



© Longo Palmarini Architecture & partners\_all rights reserved



© Longo Palmarini Architecture & partners\_all rights reserved

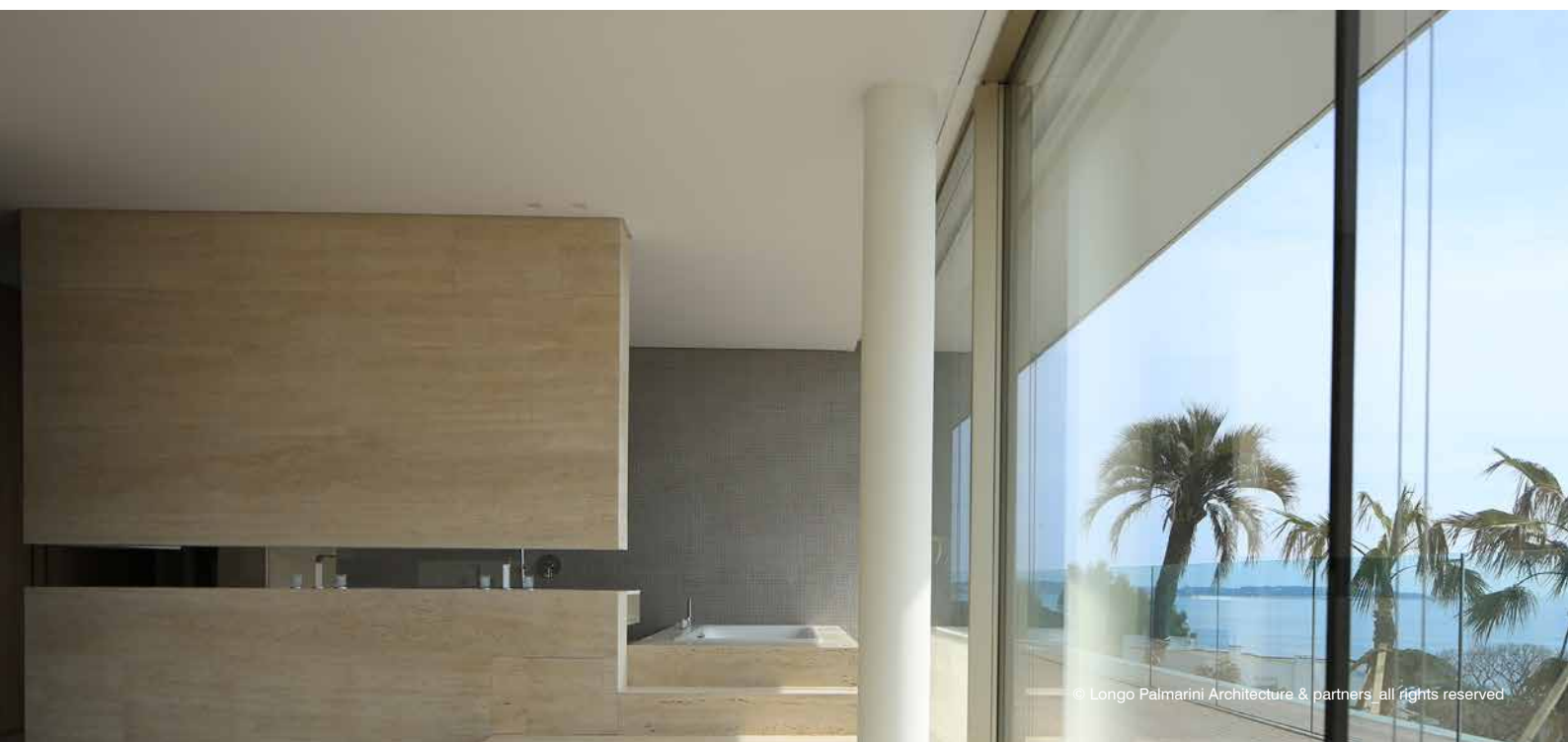
**VILLA LINDI**

**PARC CAMILLE AMELIE CANNES (FRANCE)**





© Longo Palmarini Architecture & partners\_all rights reserved



© Longo Palmarini Architecture & partners\_all rights reserved



© Longo Palmarini Architecture & partners\_all rights reserved

**SIX SENSES ONE COURCHEVEL 1850 SPA**  
**ONE COURCHEVEL 1850 (FRANCE)**

- **TYPE OF PROJECT**  
**SIX SENSES SPA**
- **SIZE DATA**  
1500 sqm
- **SPECIAL FEATURES**  
high end construction standards - fit out + FF&E
- **CLIENT**  
Promocour 1850
- **SERVICES**  
turnkey interior design project as per **LPArchitecture** best practices

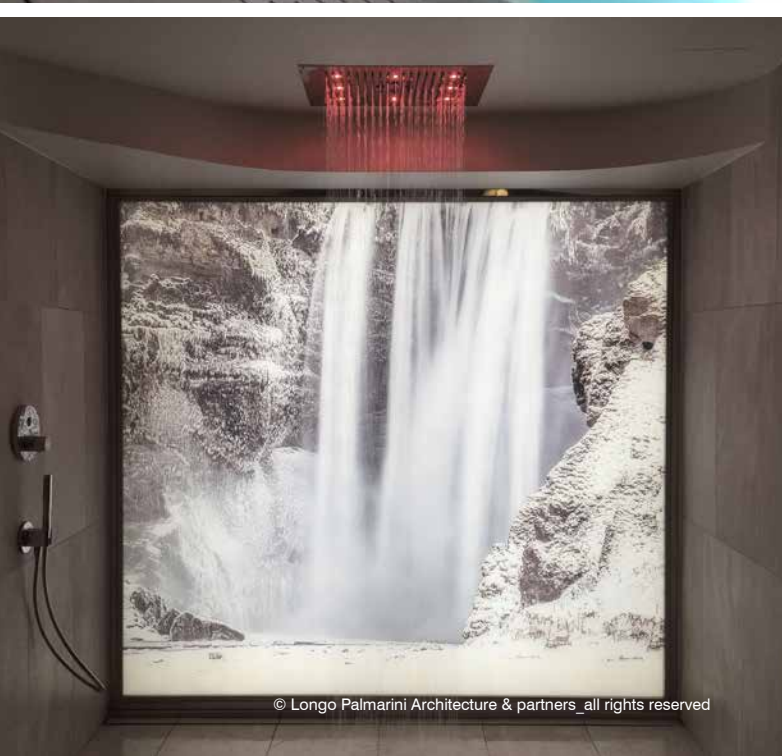




© Longo Palmarini Architecture & partners\_all rights reserved



© Longo Palmarini Architecture & partners\_all rights reserved



© Longo Palmarini Architecture & partners\_all rights reserved



© Longo Palmarini Architecture & partners\_all rights reserved



### MOUILLE POINT

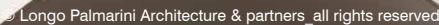
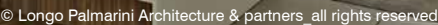
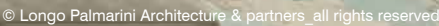
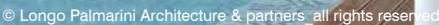
CAPE TOWN (SOUTH AFRICA)

- TYPE OF PROJECT  
luxury residential condo
- SIZE DATA  
2500 sqm
- SPECIAL FEATURES  
high end construction standards - fit out + FF&E
- CLIENT  
Greggaleighk (pty) ltd
- SERVICES  
turnkey interior design project as per **LPArchitecture** best practices



**MOUILLE POINT**  
**CAPE TOWN (SOUTH AFRICA)**





### SHAN

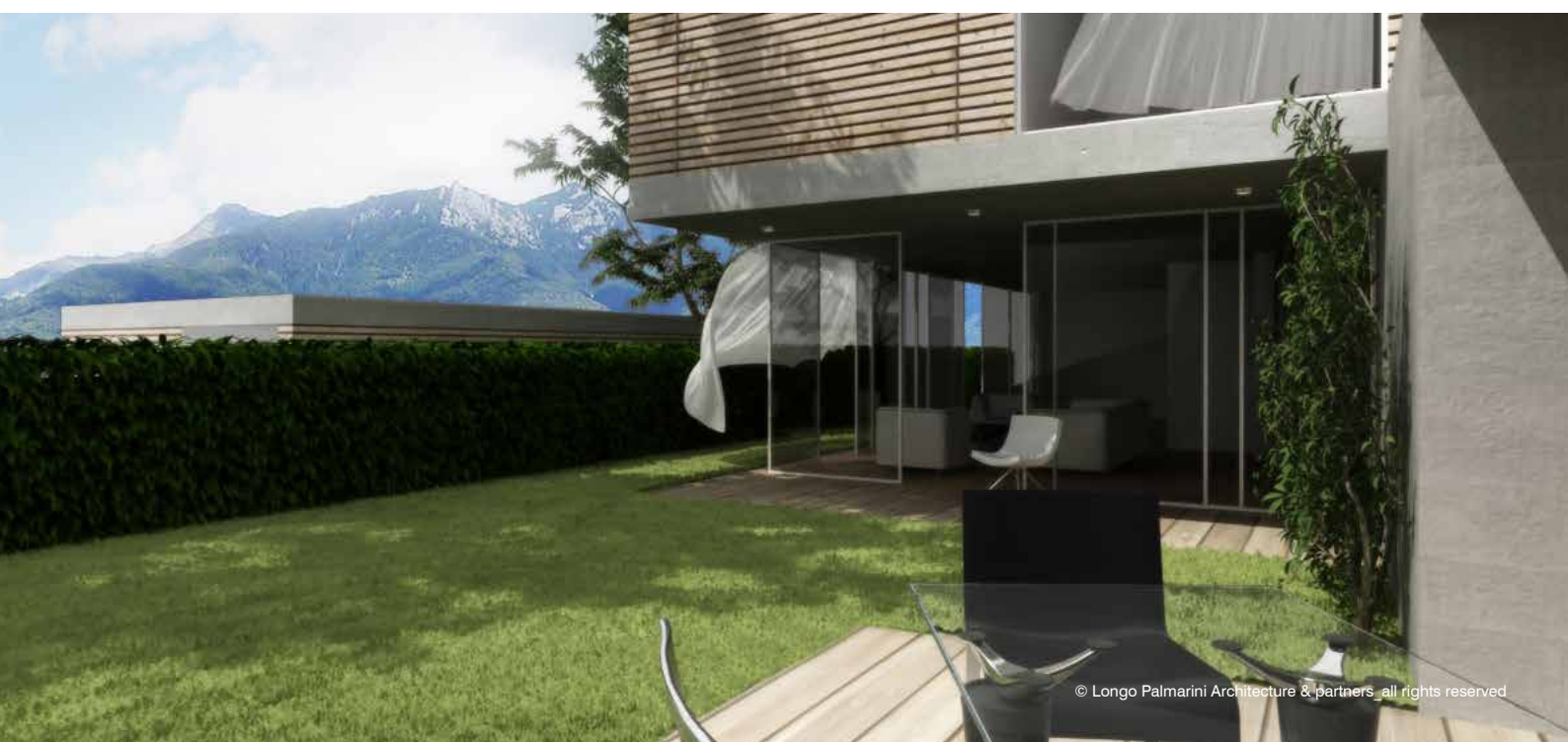
LUGANO (SWITZERLAND)

- TYPE OF PROJECT  
residential plot 5 villas
- SIZE DATA  
Villas 1500 sqm + landscaped garden 2500 sqm
- SPECIAL FEATURES  
building automation, low consumption energy
- CLIENT  
private
- SERVICES  
turnkey architectural + interior design project as per **LPArchitecture** best practices





© Longo Palmarini Architecture & partners\_all rights reserved



© Longo Palmarini Architecture & partners\_all rights reserved



© Longo Palmarini Architecture & partners\_all rights reserved

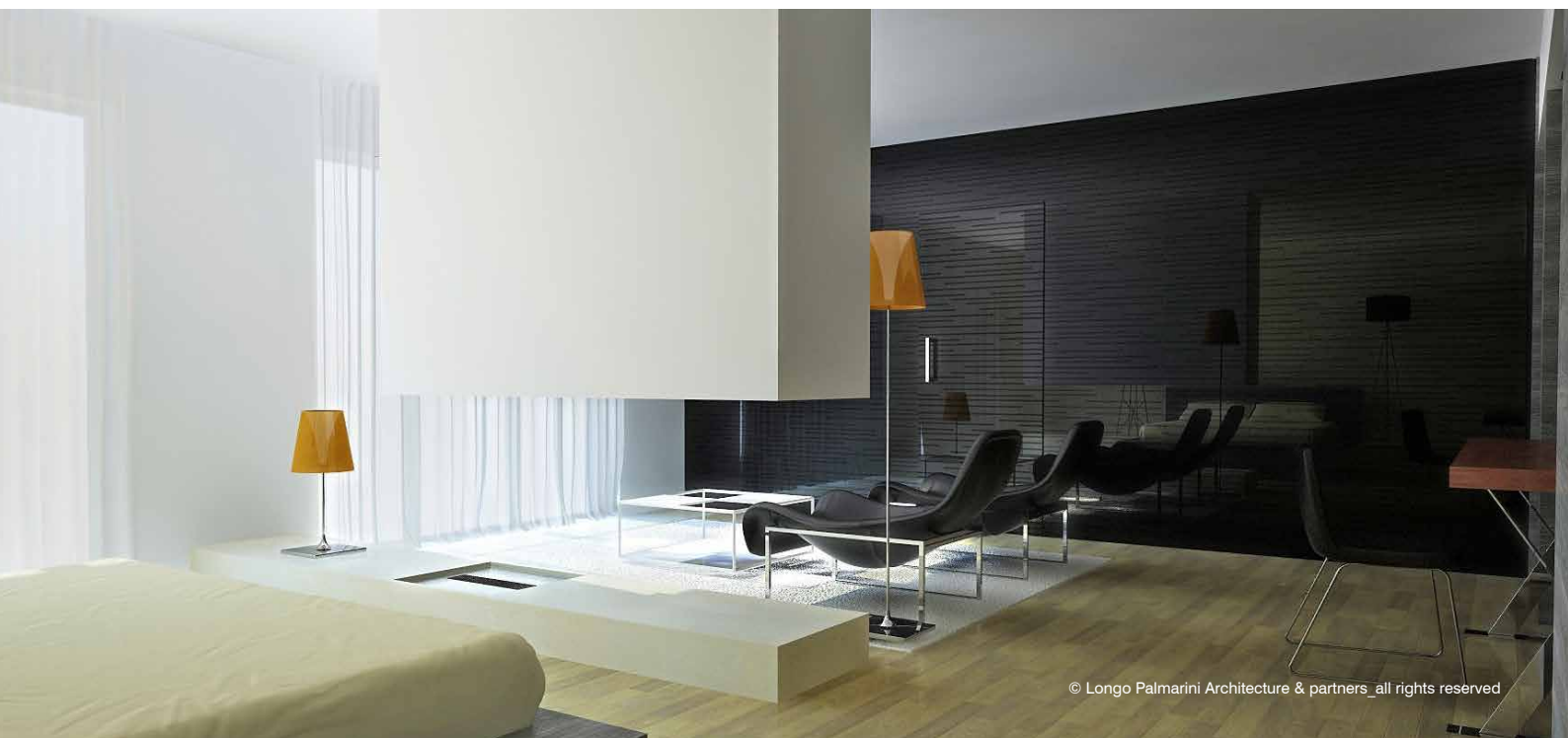
**LE PROVENCAL PENTHOUSE**  
**CAP D'ANTIBES (FRANCE)**  
[www.provençal-residence.com](http://www.provençal-residence.com)

- **TYPE OF PROJECT**  
6 stars serviced apartments condo
- **SIZE DATA**  
520 sqm + 200 terrace
- **SPECIAL FEATURES**  
restaurants, spa, conference hall, golf club, tennis club , private beach
- **CLIENT**  
Le Provençal Investments SA
- **SERVICES**  
turnkey interior design project as per **LPArchitecture** best practices





© Longo Palmarini Architecture & partners\_all rights reserved



© Longo Palmarini Architecture & partners\_all rights reserved



© Longo Palmarini Architecture & partners\_all rights reserved

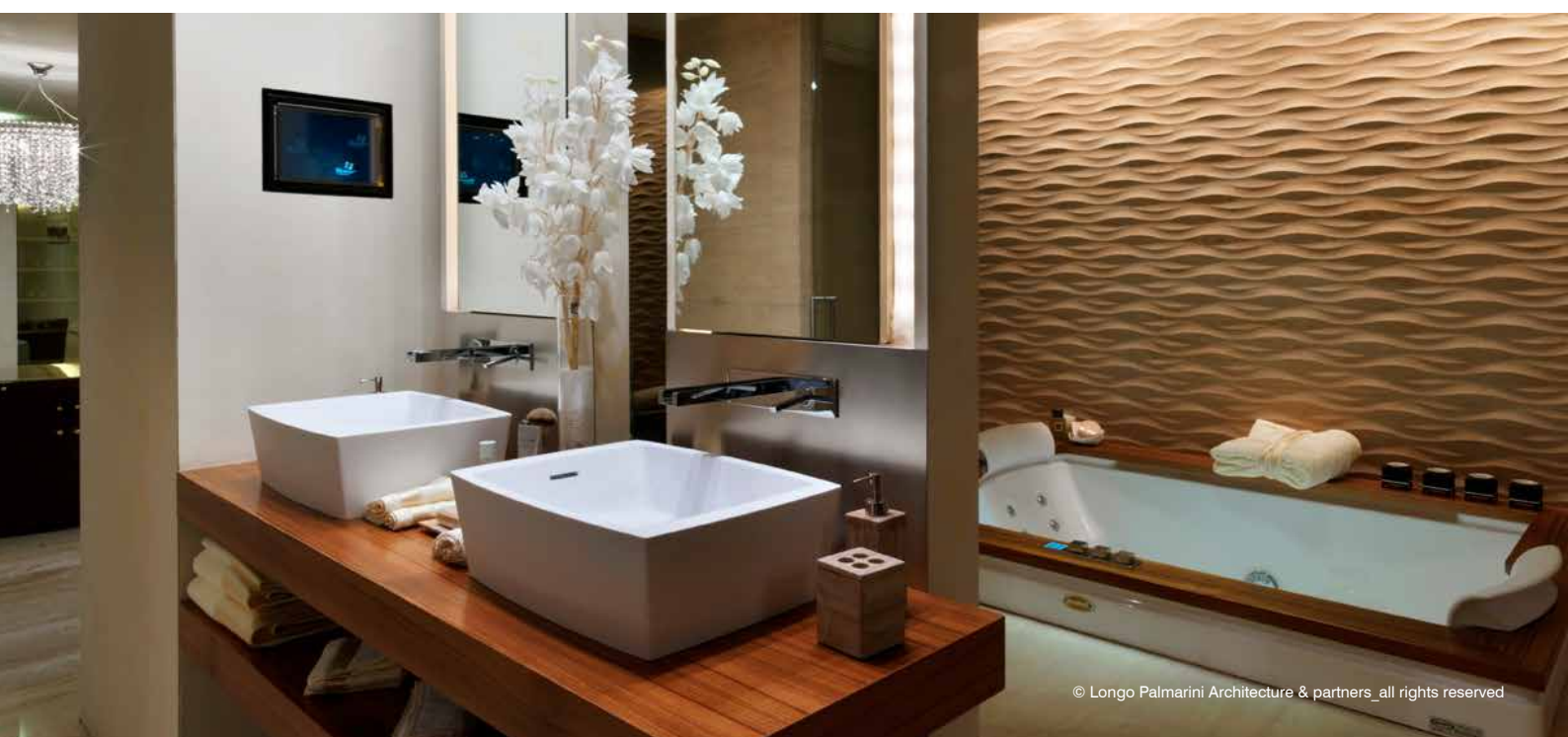


**LE PROVENCAL, LUXURY SERVICED APARTMENTS CONDO A  
CAP D'ANTIBES (FRANCE)**  
[www.provençal-residence.com](http://www.provençal-residence.com)

- **TYPE OF PROJECT**  
6 stars serviced apartments
- **SIZE DATA**  
15.000 sqm – 60 apartments
- **SPECIAL FEATURES**  
restaurants, spa, conference hall, golf club, tennis club , private beach;
- **CLIENT**  
Le Provençal Investments SA
- **SERVICES**  
turnkey interior design project as per **LPArchitecture** best practices



© Longo Palmarini Architecture & partners\_all rights reserved



© Longo Palmarini Architecture & partners\_all rights reserved



© Longo Palmarini Architecture & partners\_all rights reserved

**LE PROVENCAL, LUXURY SERVICED APARTMENTS CONDO B**  
**CAP D'ANTIBES (FRANCE)**  
[www.provencal-residence.com](http://www.provencal-residence.com)

- **TYPE OF PROJECT**  
6 stars serviced apartments
- **SIZE DATA**  
15.000 sqm – 60 apartments
- **SPECIAL FEATURES**  
restaurants, spa, conference hall, golf club, tennis club , private beach;
- **CLIENT**  
Le Provencal Investments SA
- **SERVICES**  
turnkey interior design project as per **LPArchitecture** best practices





### VILLA LOU

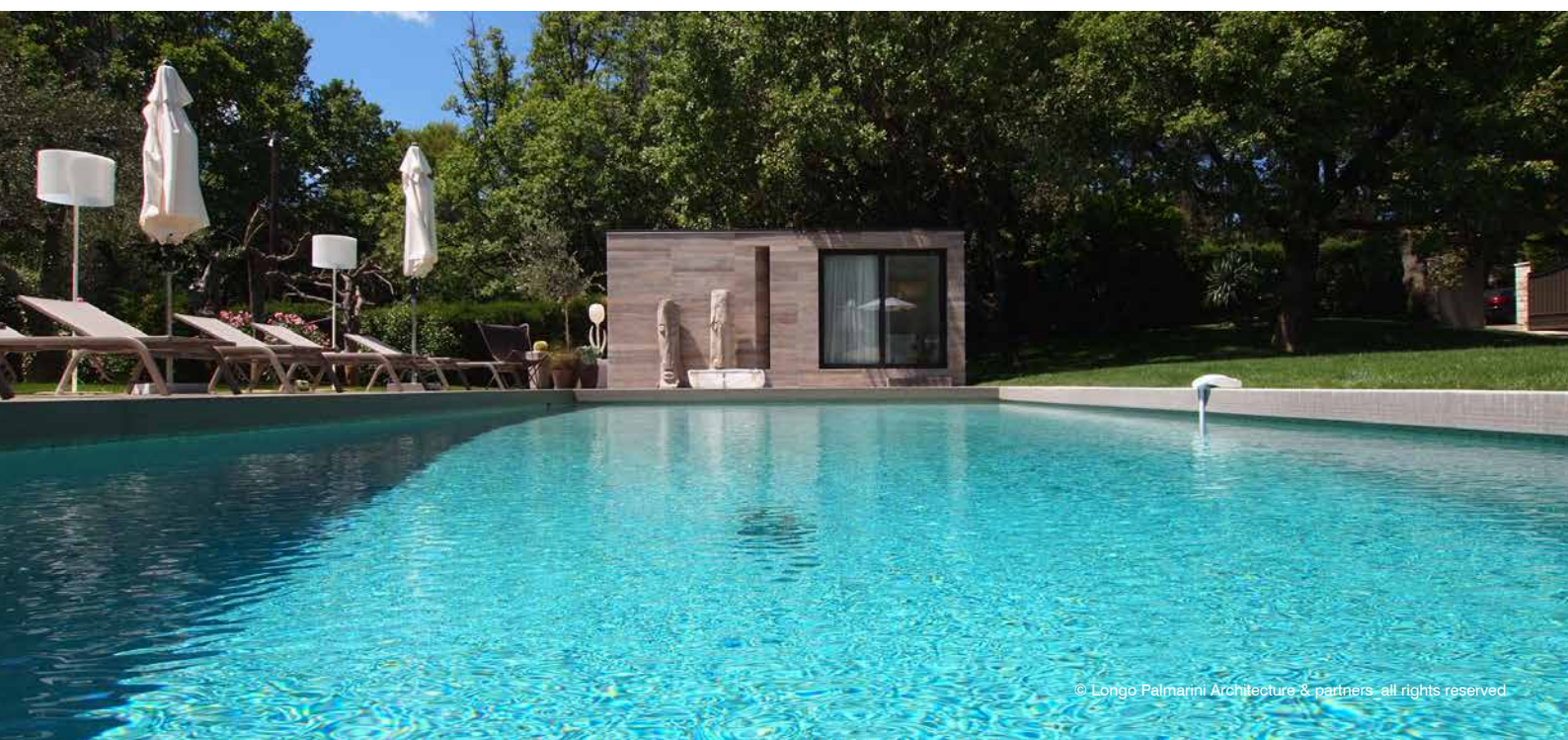
OPIO COTE D'AZUR (FRANCE)

- TYPE OF PROJECT  
luxury residential
- SIZE DATA  
Villa 350 sqm + landscaped garden 2500 sqm
- SPECIAL FEATURES  
high end construction standards - fit out + FF&E
- CLIENT  
private
- SERVICES  
turnkey interior design project as per **LPArchitecture** best practices





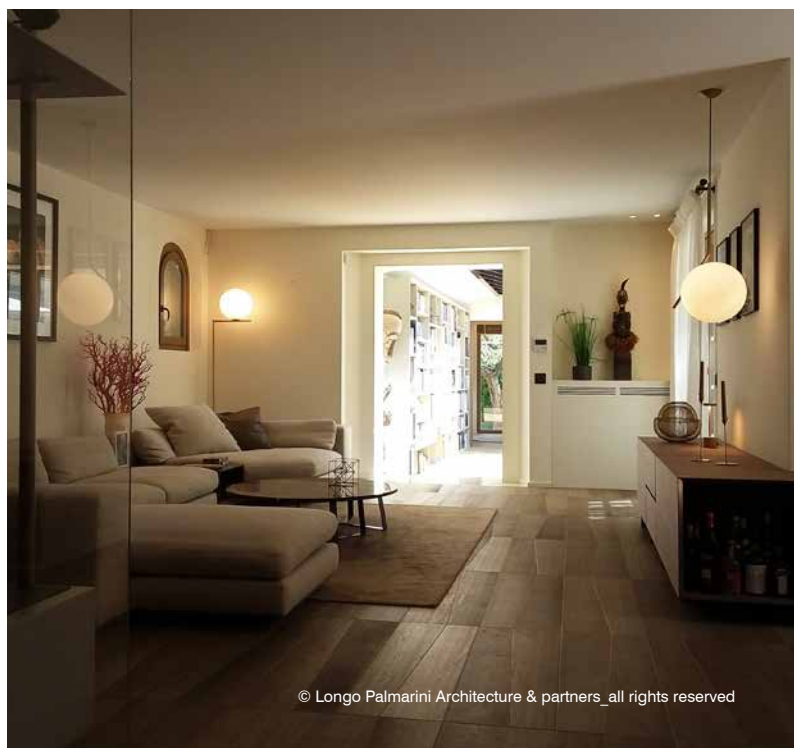
© Longo Palmarini Architecture & partners\_all rights reserved



© Longo Palmarini Architecture & partners\_all rights reserved



© Longo Palmarini Architecture & partners\_all rights reserved



© Longo Palmarini Architecture & partners\_all rights reserved

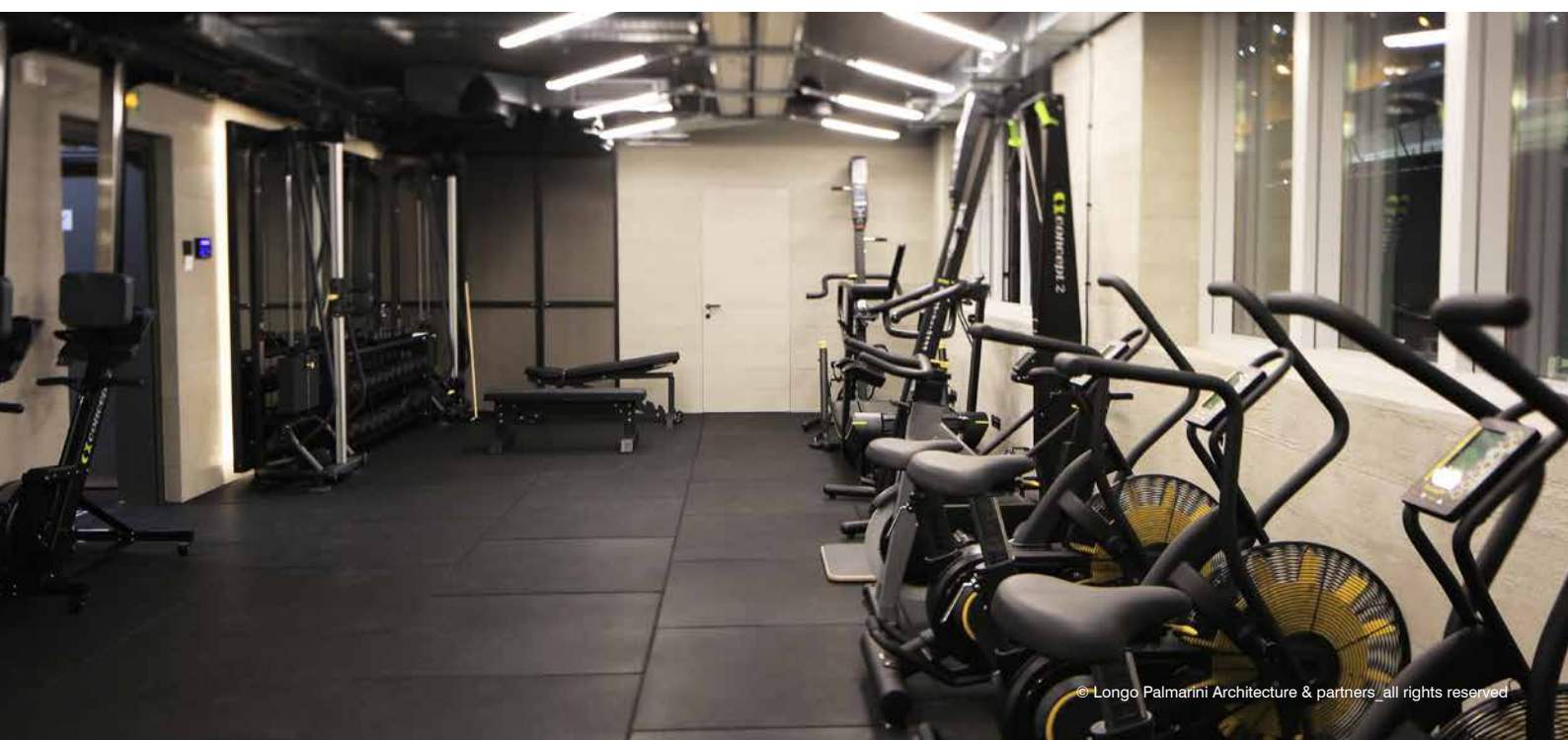
### THE FORGE GYM MONTECARLO (PRINCIPAUTE DE MONACO)

- TYPE OF PROJECT  
GYM
- SIZE DATA  
400 sqm
- SPECIAL FEATURES  
high end construction standards - fit out + FF&E
- CLIENT  
private
- SERVICES  
turnkey + interior design project as per LPArchitecture best practices





© Longo Palmarini Architecture & partners\_all rights reserved



© Longo Palmarini Architecture & partners\_all rights reserved

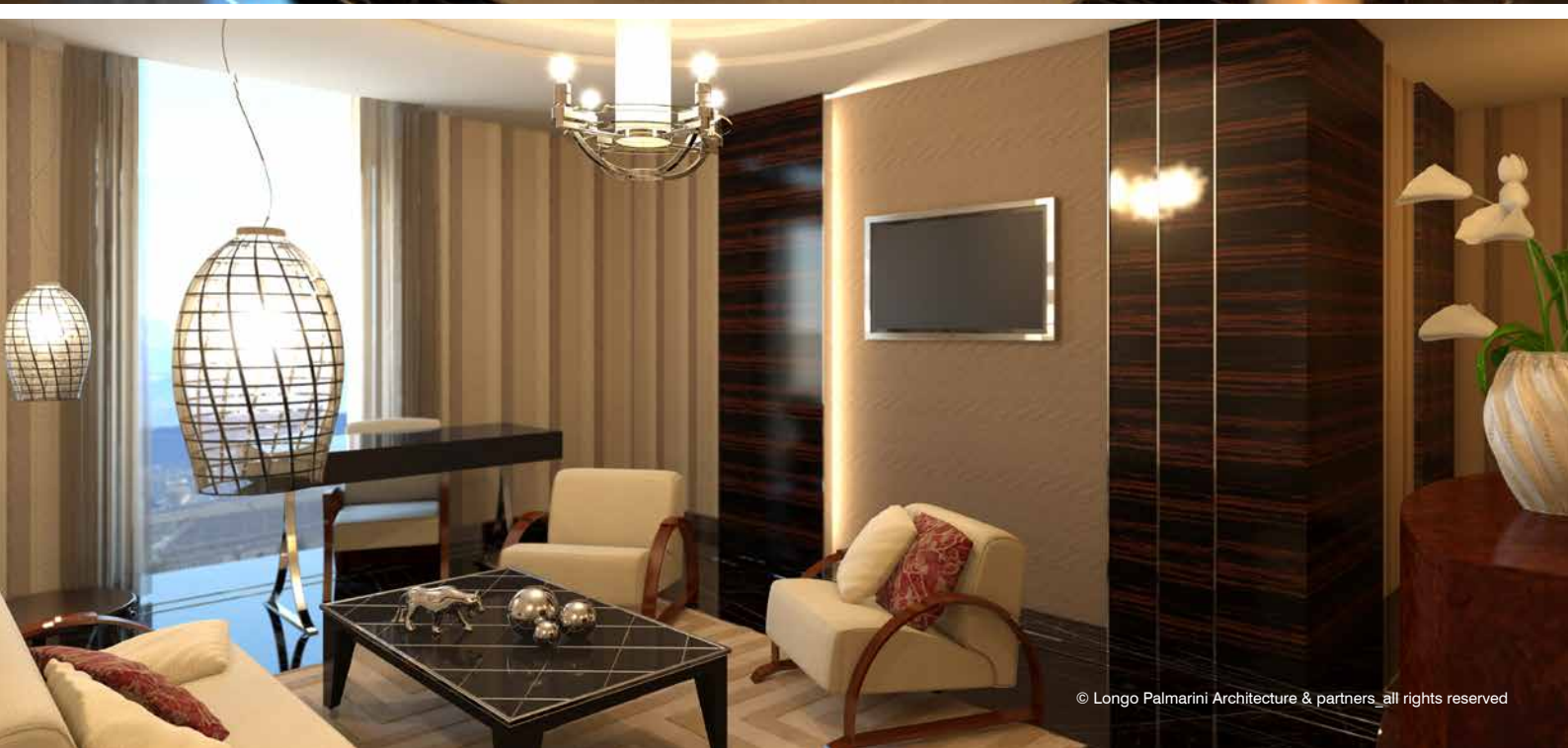


© Longo Palmarini Architecture & partners\_all rights reserved



### BAGLIONI HOTEL ROME ROME (ITALY)

- TYPE OF PROJECT  
5 stars luxury boutique hotel
- SIZE DATA  
6.000 sqm – 60 suites
- SPECIAL FEATURES  
restaurants, spa, conference hall, rooms
- CLIENT  
BAGLIONI HOTELS GROUP SPA
- SERVICES  
turnkey interior design project as per **LPArchitecture** best practices



### VILLA HARRIS

VALLAURIS COTE D'AZUR (FRANCE)

- TYPE OF PROJECT  
luxury residential
- SIZE DATA  
Villa 400 sqm + landscaped garden 1800 sqm
- SPECIAL FEATURES  
high end construction standards - fit out + FF&E
- CLIENT  
private
- SERVICES  
turnkey interior design project as per **LPArchitecture** best practices





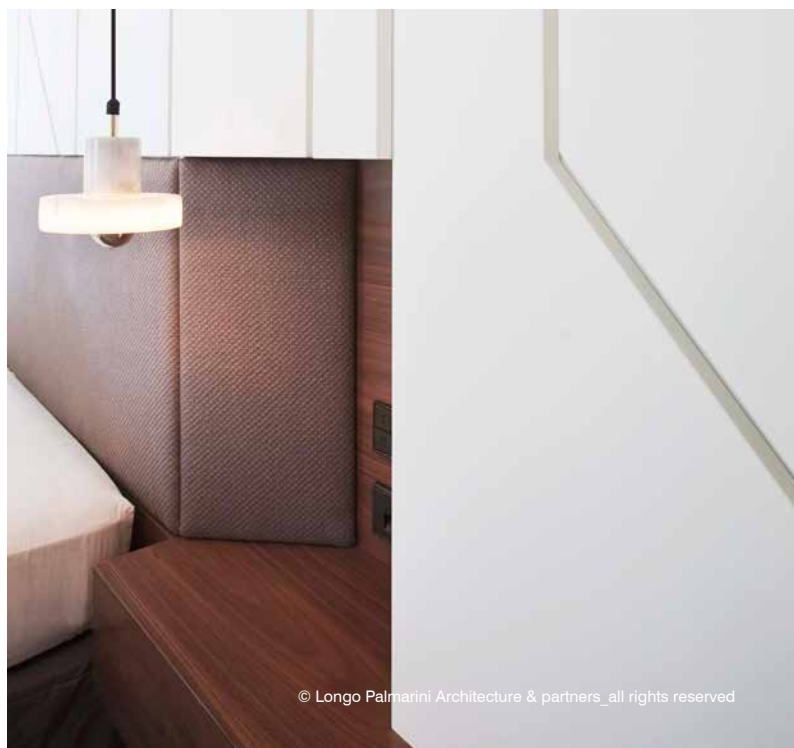
© Longo Palmarini Architecture & partners\_all rights reserved



© Longo Palmarini Architecture & partners\_all rights reserved



© Longo Palmarini Architecture & partners\_all rights reserved



© Longo Palmarini Architecture & partners\_all rights reserved



LE PROVENCAL, LUXURY SERVICED APARTMENTS CONDO B  
CAP D'ANTIBES (FRANCE)  
[www.provençal-residence.com](http://www.provençal-residence.com)

- TYPE OF PROJECT  
marketing suite
- SIZE DATA  
2.000 sqm
- SPECIAL FEATURES  
bar, conference hall, mock up aparts
- CLIENT  
Le Provençal Investments SA
- SERVICES  
turnkey interior design project as per **LPArchitecture** best practices



© Longo Palmarini Architecture & partners\_all rights reserved



© Longo Palmarini Architecture & partners\_all rights reserved



© Longo Palmarini Architecture & partners\_all rights reserved

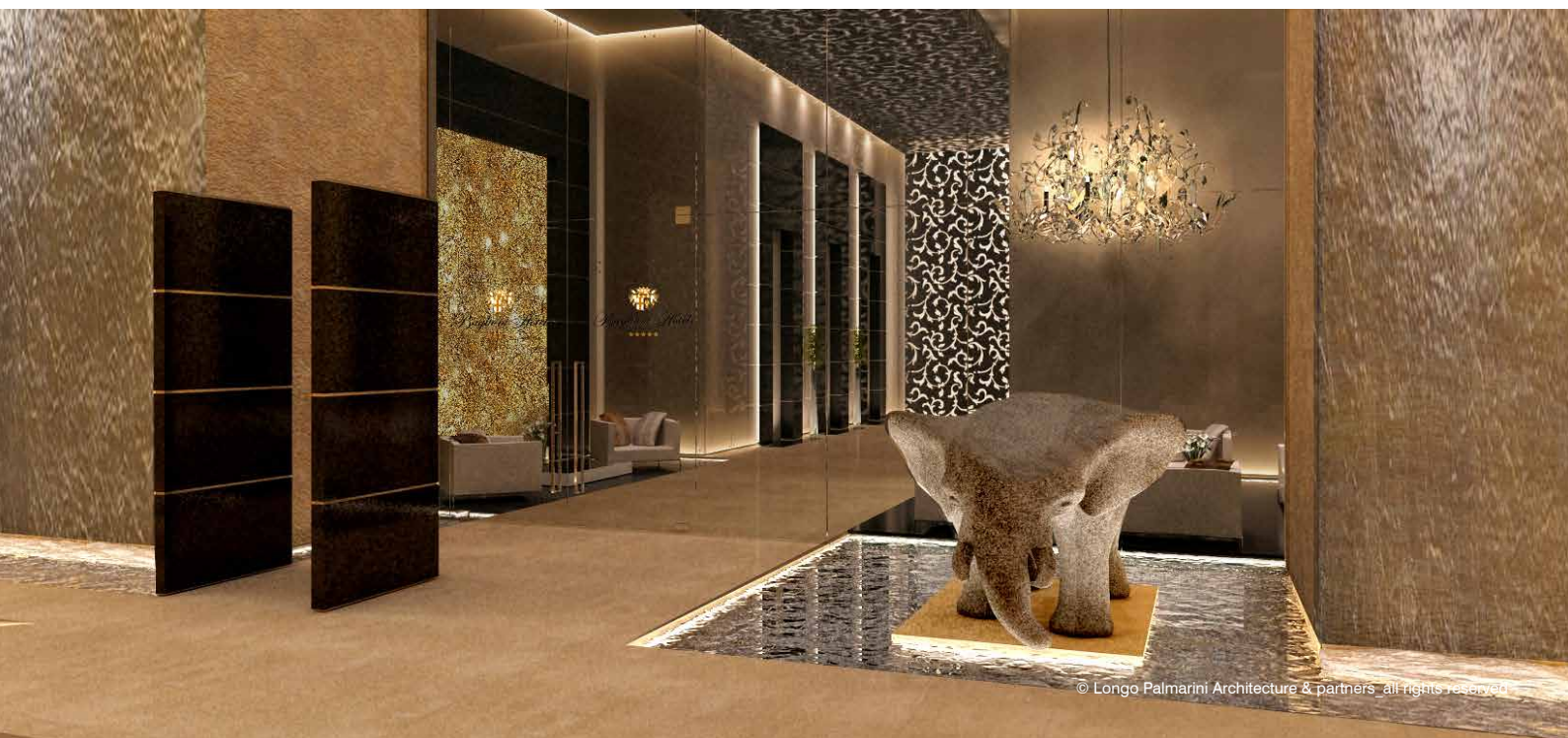
### BAGLIONI HOTEL BOMBAY (INDIA)

- TYPE OF PROJECT  
5 stars boutique hotel
- SIZE DATA  
13400 sqm - 96 keys
- SPECIAL FEATURES  
restaurant, spa, penthouse suite, business floor
- CLIENT  
Raptakos, Brett & Co. Ltd
- SERVICES  
turnkey interior design project as per **LPArchitecture** best practices





© Longo Palmarini Architecture & partners\_all rights reserved



© Longo Palmarini Architecture & partners\_all rights reserved



© Longo Palmarini Architecture & partners\_all rights reserved



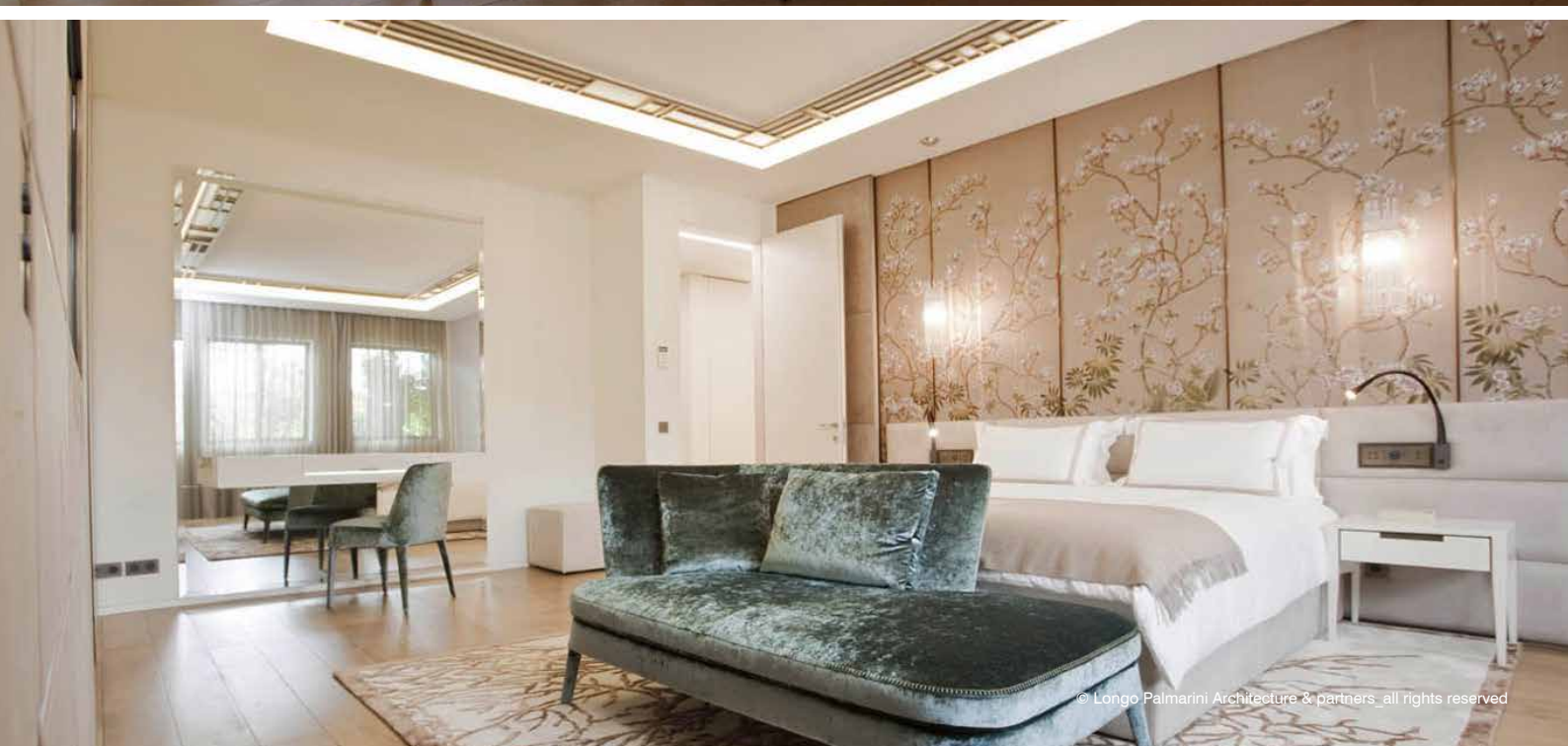
### PETITE AFRIQUE

MONTECARLO (PRINCIPAUTE DE MONACO)

- TYPE OF PROJECT  
luxury residential
- SIZE DATA  
7th floor 700 sqm
- SPECIAL FEATURES  
high construction standard - apt provided with FF&E
- CLIENT  
private
- SERVICES  
turnkey interior design project as per **LPArchitecture** best practices



© Longo Palmarini Architecture & partners\_all rights reserved



© Longo Palmarini Architecture & partners\_all rights reserved



© Longo Palmarini Architecture & partners\_all rights reserved

### TITO LIVIO MILAN (ITALY)

- TYPE OF PROJECT  
residential renovation
- SIZE DATA  
260 sqm
- SPECIAL FEATURES  
bespoke furniture - apt provided with FF&E
- CLIENT  
private
- SERVICES  
turnkey interior design project as per **LPArchitecture** best practices

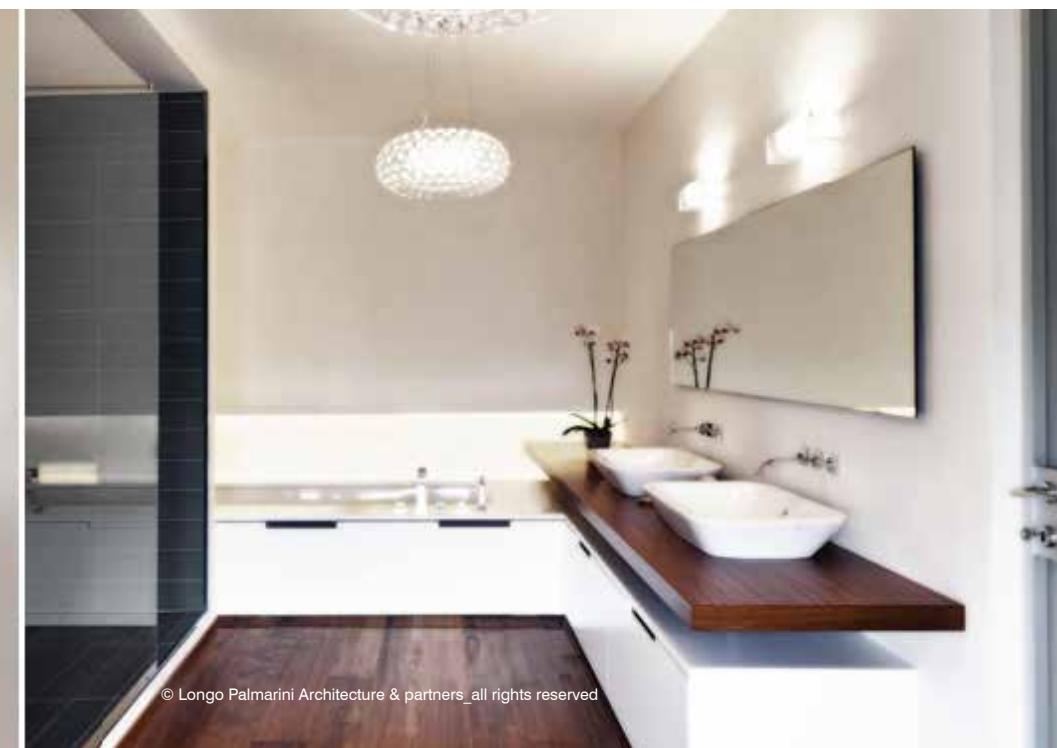




© Longo Palmarini Architecture & partners\_all rights reserved



© Longo Palmarini Architecture & partners\_all rights reserved



© Longo Palmarini Architecture & partners\_all rights reserved



### QTR DOHA (QATAR)

- TYPE OF PROJECT  
architectural contest
- SIZE DATA  
25.000 sqm - land plot 240.000 sqm
- SPECIAL FEATURES  
multi-function real estate development
- CLIENT  
PEO - private engineering office - Doha - Qatar
- SERVICES  
concept design as per contest requirements





© Longo Palmarini Architecture & partners\_all rights reserved



© Longo Palmarini Architecture & partners\_all rights reserved

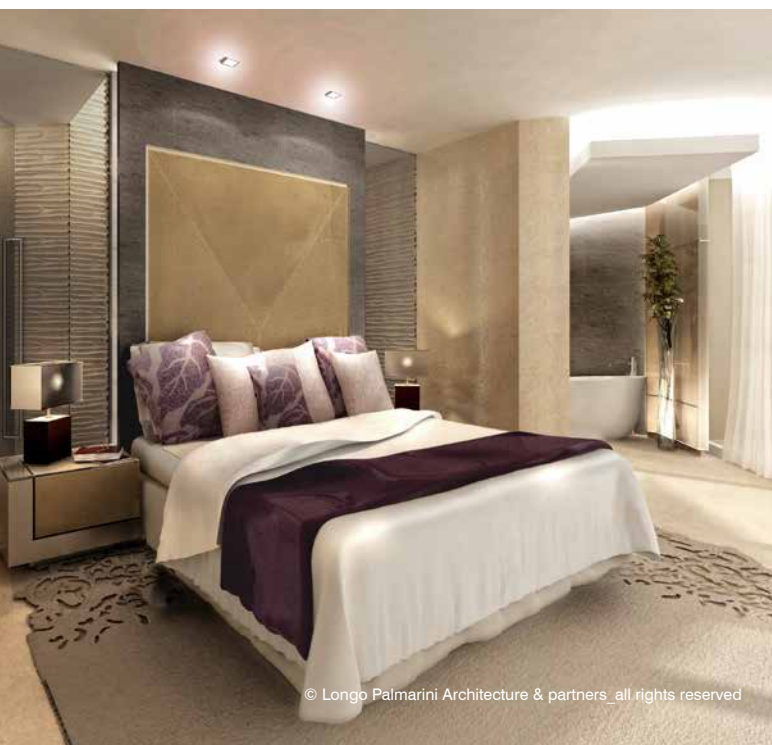


© Longo Palmarini Architecture & partners\_all rights reserved



### PUNTA ALA GROSSETO (ITALY)

- TYPE OF PROJECT  
private villa
- SIZE DATA  
350 sqm + 400 sqm terrace
- SPECIAL FEATURES  
high end construction standards - fit out + FF&E
- CLIENT  
private
- SERVICES  
turnkey + interior design project as per **LPArchitecture** best practices



### ALASSIO

ALASSIO (ITALY)

- TYPE OF PROJECT  
private villa
- SIZE DATA  
100 sqm
- SPECIAL FEATURES  
high end construction standards - fit out + FF&E
- CLIENT  
private
- SERVICES  
turnkey architectural + interior design project as per **LPArchitecture** best practices





© Longo Palmarini Architecture & partners\_all rights reserved



© Longo Palmarini Architecture & partners\_all rights reserved



© Longo Palmarini Architecture & partners\_all rights reserved





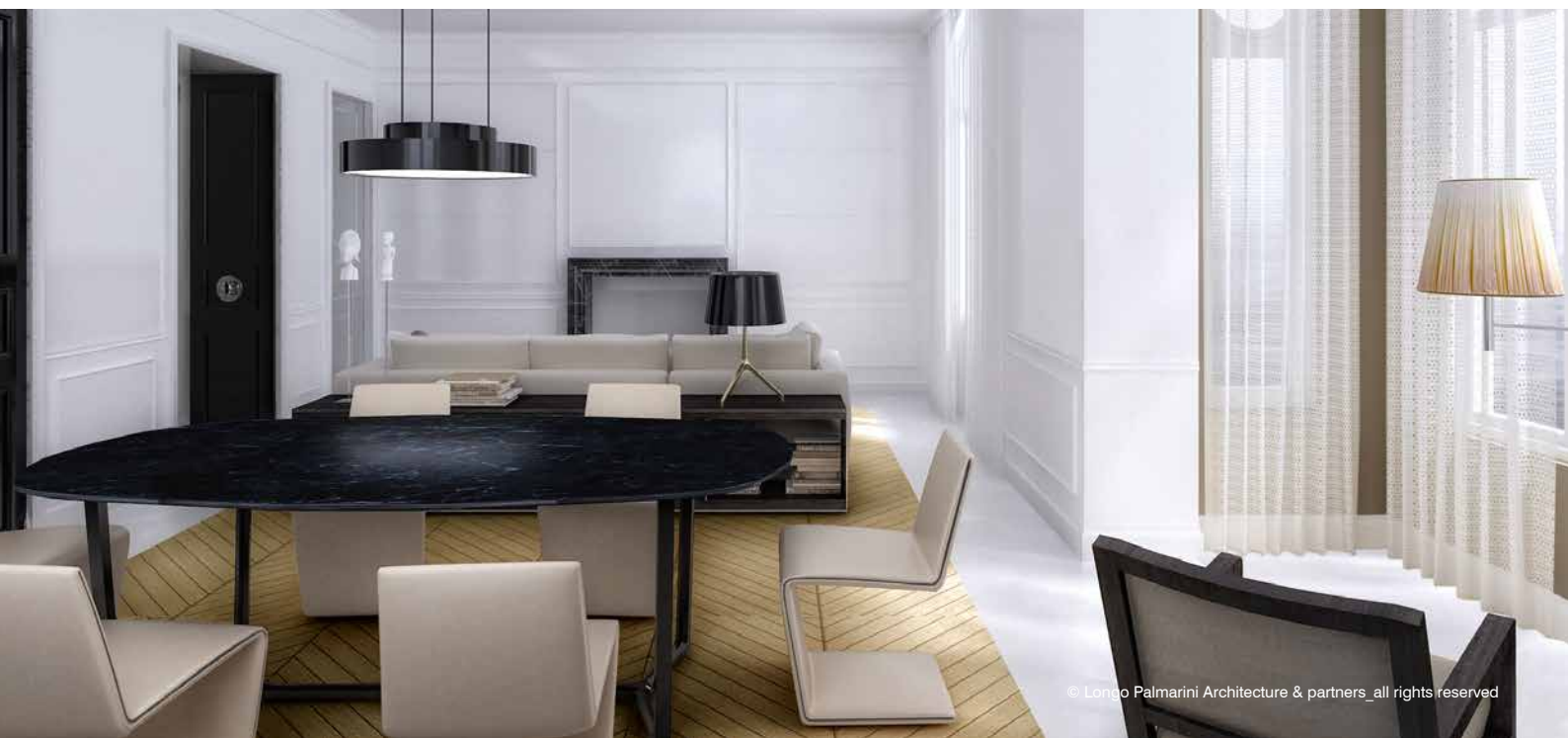
### SANLAU

MONTECARLO (PRINCIPAUTE DE MONACO)

- TYPE OF PROJECT  
residential
- SIZE DATA  
100 sqm
- SPECIAL FEATURES  
high end construction standards - fit out + FF&E
- CLIENT  
private
- SERVICES  
turnkey interior design project as per **LPArchitecture** best practices



© Longo Palmarini Architecture & partners\_all rights reserved



© Longo Palmarini Architecture & partners\_all rights reserved



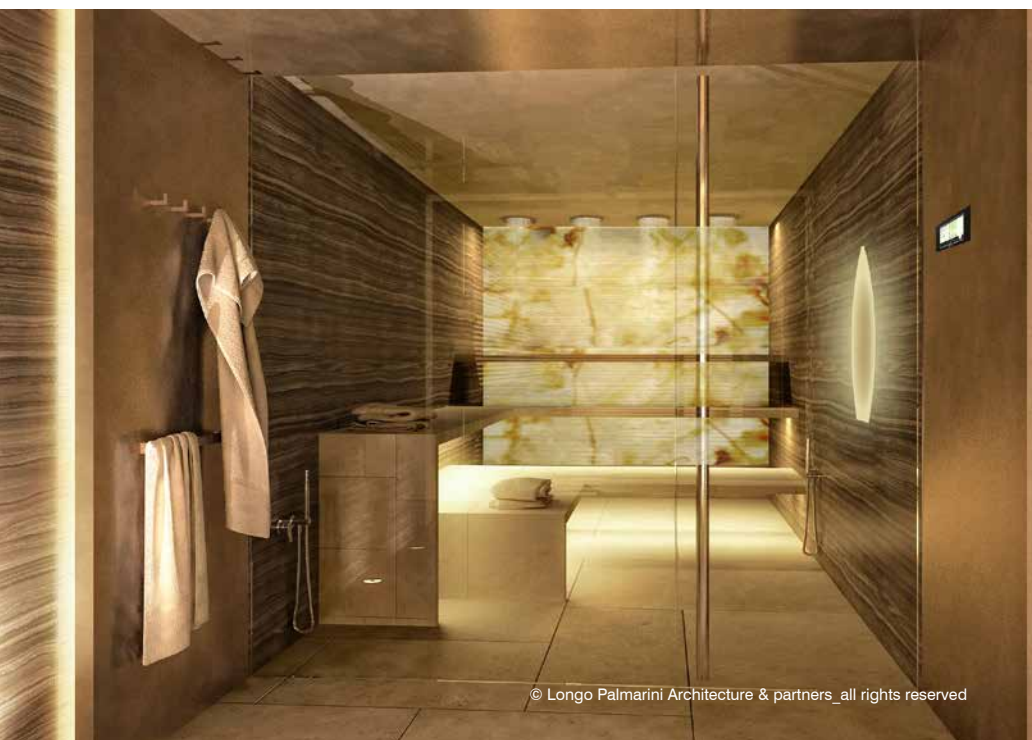
© Longo Palmarini Architecture & partners\_all rights reserved



### CRICKET HILL & SINGLE OAK LONDON (UK)

- TYPE OF PROJECT  
private villa
- SIZE DATA  
3000 sqm main house + 2000 sqm summer house
- SPECIAL FEATURES  
high end construction standards - fit out + FF&E
- CLIENT  
private
- SERVICES  
turnkey interior design project as per **LPArchitecture** best practices







### RESIDENTIAL BUILDING CAP D'ANTIBES (FRANCE)

- TYPE OF PROJECT  
luxury residential
- SIZE DATA  
120 sqm
- SPECIAL FEATURES  
high end construction standards - fit out + FF&E
- CLIENT  
Le Provencal Investments SA
- SERVICES  
turnkey interior design project as per **LPArchitecture** best practices





© Longo Palmarini Architecture & partners\_all rights reserved



© Longo Palmarini Architecture & partners\_all rights reserved



© Longo Palmarini Architecture & partners\_all rights reserved

### LES OLIVIERS INTERIOR DESIGN CONTEST CAP D'ANTIBES (FRANCE)

- TYPE OF PROJECT  
luxury residential
- SIZE DATA  
2000 sqm
- SPECIAL FEATURES  
high end construction standards - fit out + FF&E
- CLIENT  
Le Provencal Investments SA
- SERVICES  
turnkey interior design project as per **LPArchitecture** best practices







### ONE COURCHEVEL 1850 COURCHEVEL (FRANCE)

- TYPE OF PROJECT  
luxury residential
- SIZE DATA  
7000 sqm
- SPECIAL FEATURES  
high end construction standards - fit out + FF&E
- CLIENT  
Promocour 1850
- SERVICES  
turnkey interior design project as per **LPArchitecture** best practices



### VILLA ROCK

SAINT JEAN CAP FERRAT (FRANCE)

- TYPE OF PROJECT  
luxury residential
- SIZE DATA  
350 sqm
- SPECIAL FEATURES  
high end construction standards - fit out + FF&E
- CLIENT  
private
- SERVICES  
turnkey interior design project as per **LPArchitecture** best practices





© Longo Palmarini Architecture & partners\_all rights reserved



© Longo Palmarini Architecture & partners\_all rights reserved



© Longo Palmarini Architecture & partners\_all rights reserved

### LA LESTRA \_ DEVELOPED WITH JPA MONTECARLO (PRINCIPAUTE DE MONACO)

- TYPE OF PROJECT  
luxury residential
- SIZE DATA  
15000 sqm basement + parking included
- SPECIAL FEATURES  
high end construction standards - fit out + FF&E
- CLIENT  
private
- SERVICES  
turnkey + interior design project as per LPArchitecture best practices





The images are courtesy of Jean Pierre Antorini Architect – LPArchitecture partner



The images are courtesy of Jean Pierre Antorini Architect – LPArchitecture partner



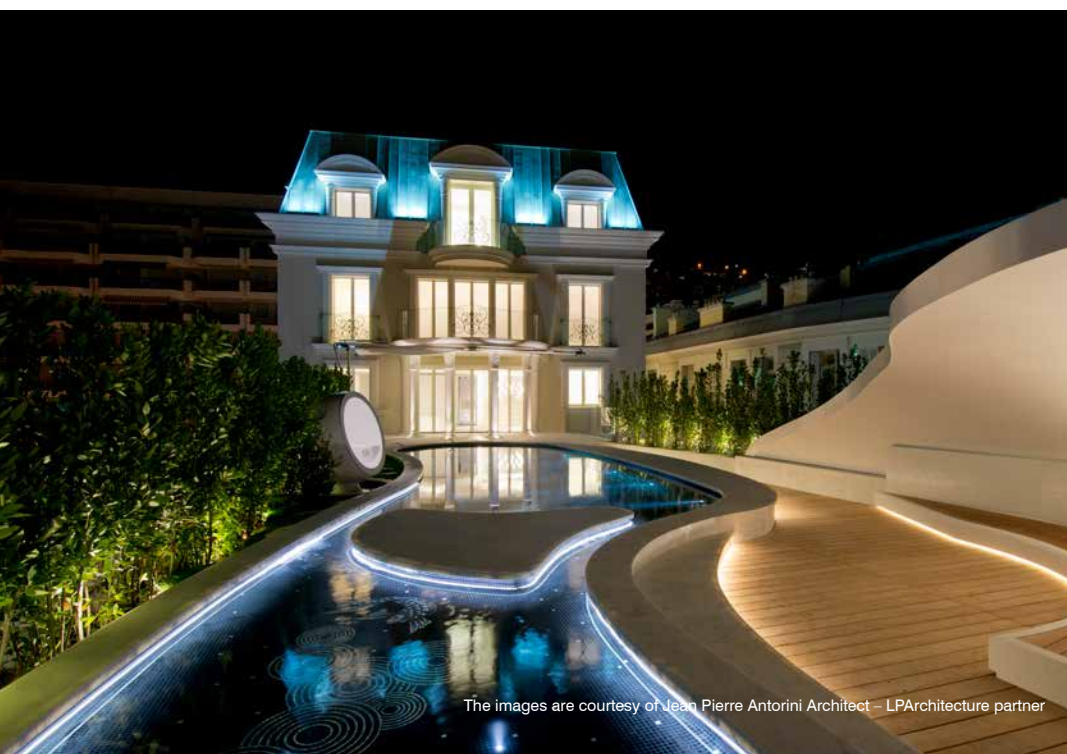
The images are courtesy of Jean Pierre Antorini Architect – LPArchitecture partner



LA LESTRA \_ DEVELOPED WITH JPA  
MONTECARLO (PRINCIPAUTE DE MONACO)

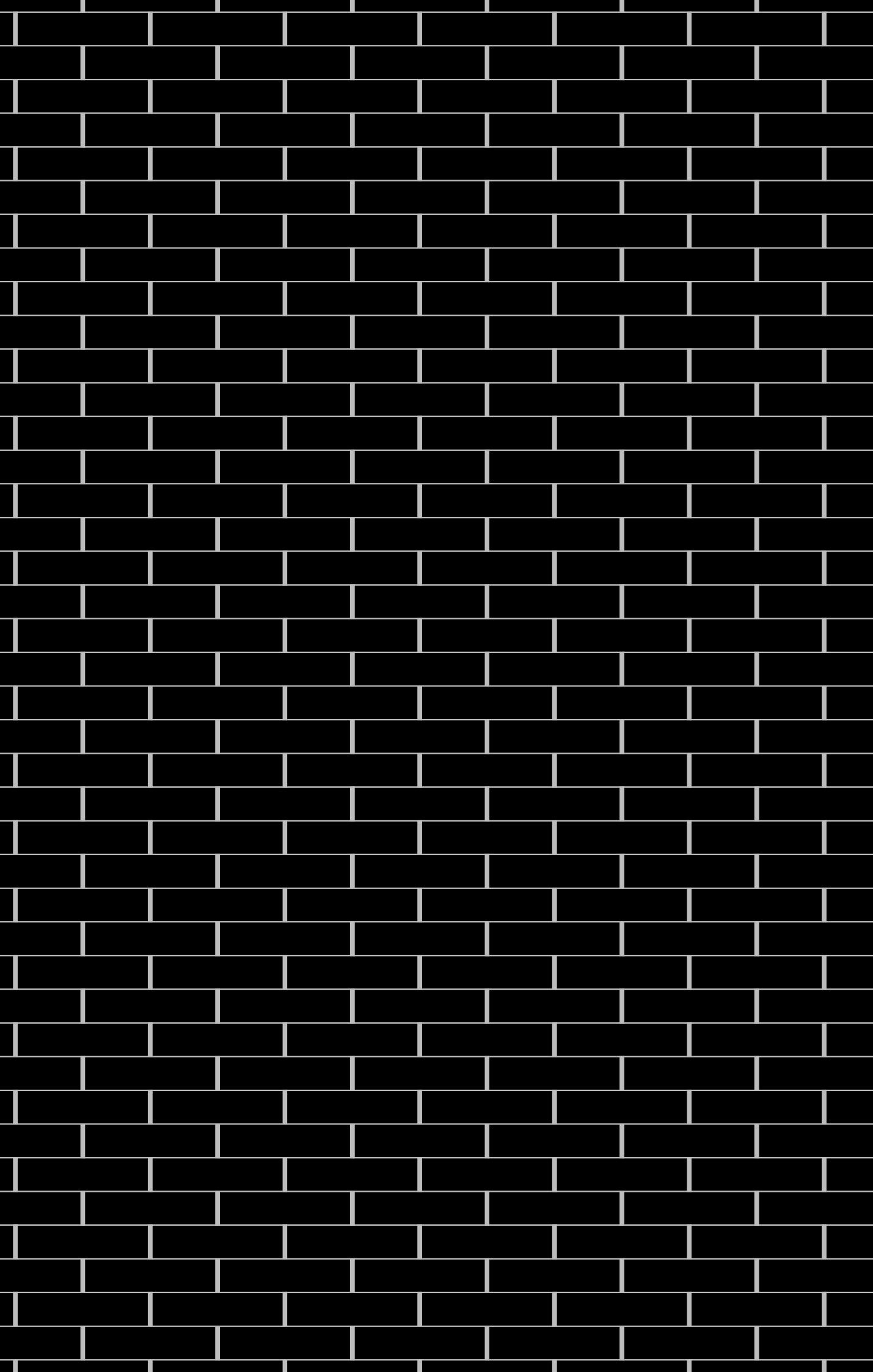


The images are courtesy of Jean Pierre Antorini Architect - LPArchitecture partner



The images are courtesy of Jean Pierre Antorini Architect - LPArchitecture partner





## PUBLICATIONS





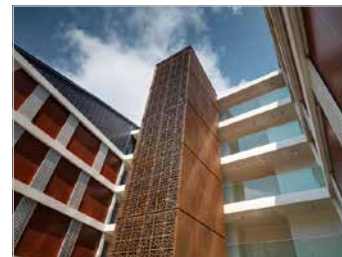
How to Spend It – FT



Italian Panorama vol.2



a+d+m



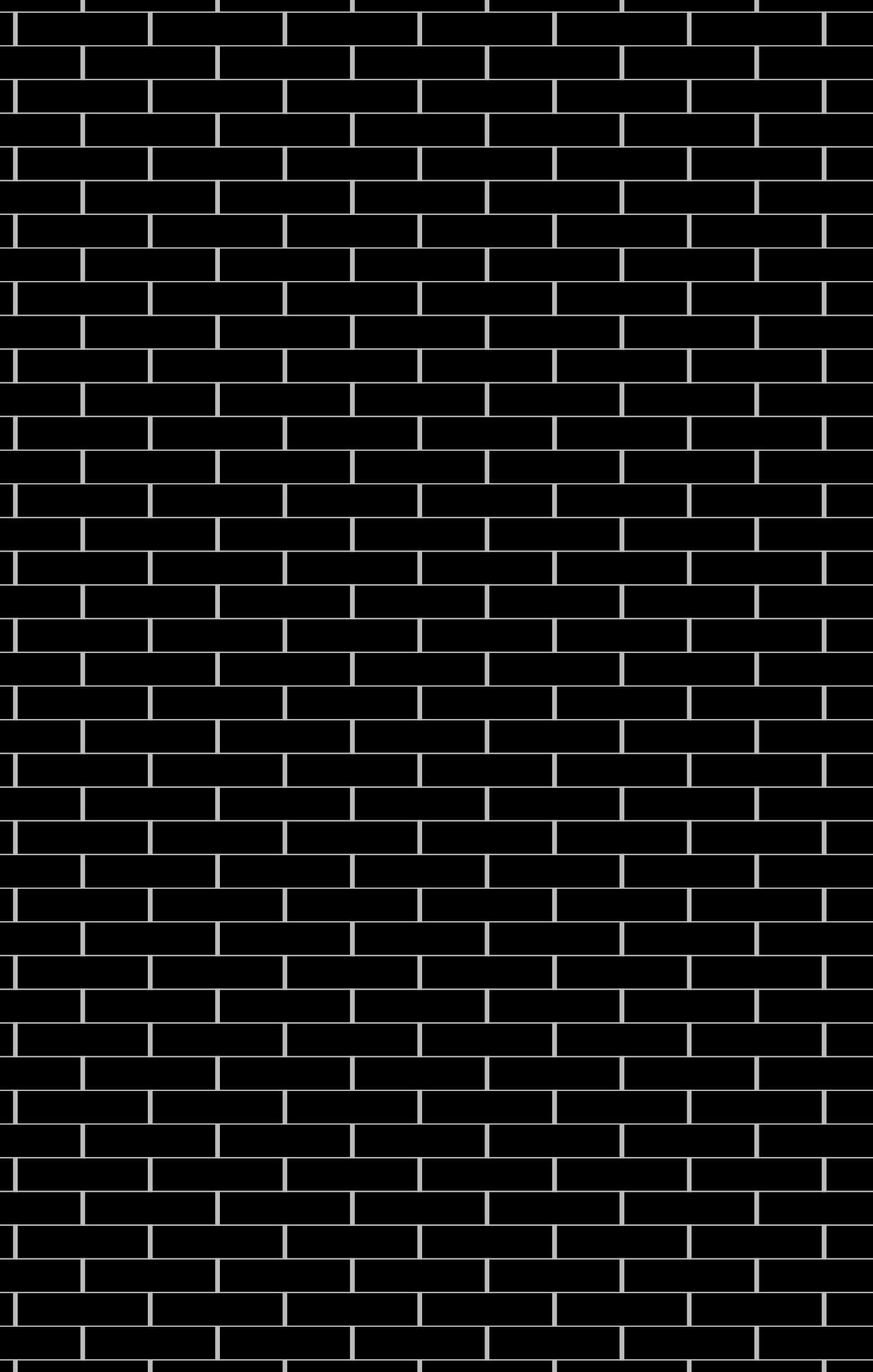
THE PLAN



Casabella

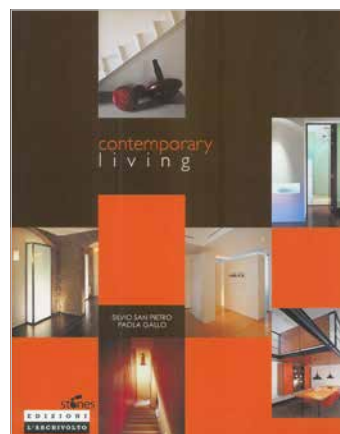


150 Best Loft Ideas

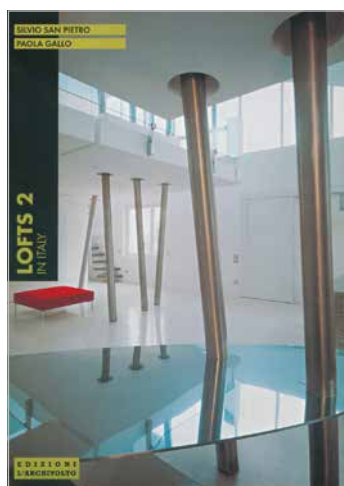




New House



Contemporary Living



Lofts 2 in Italy



Kitchens / Cucine

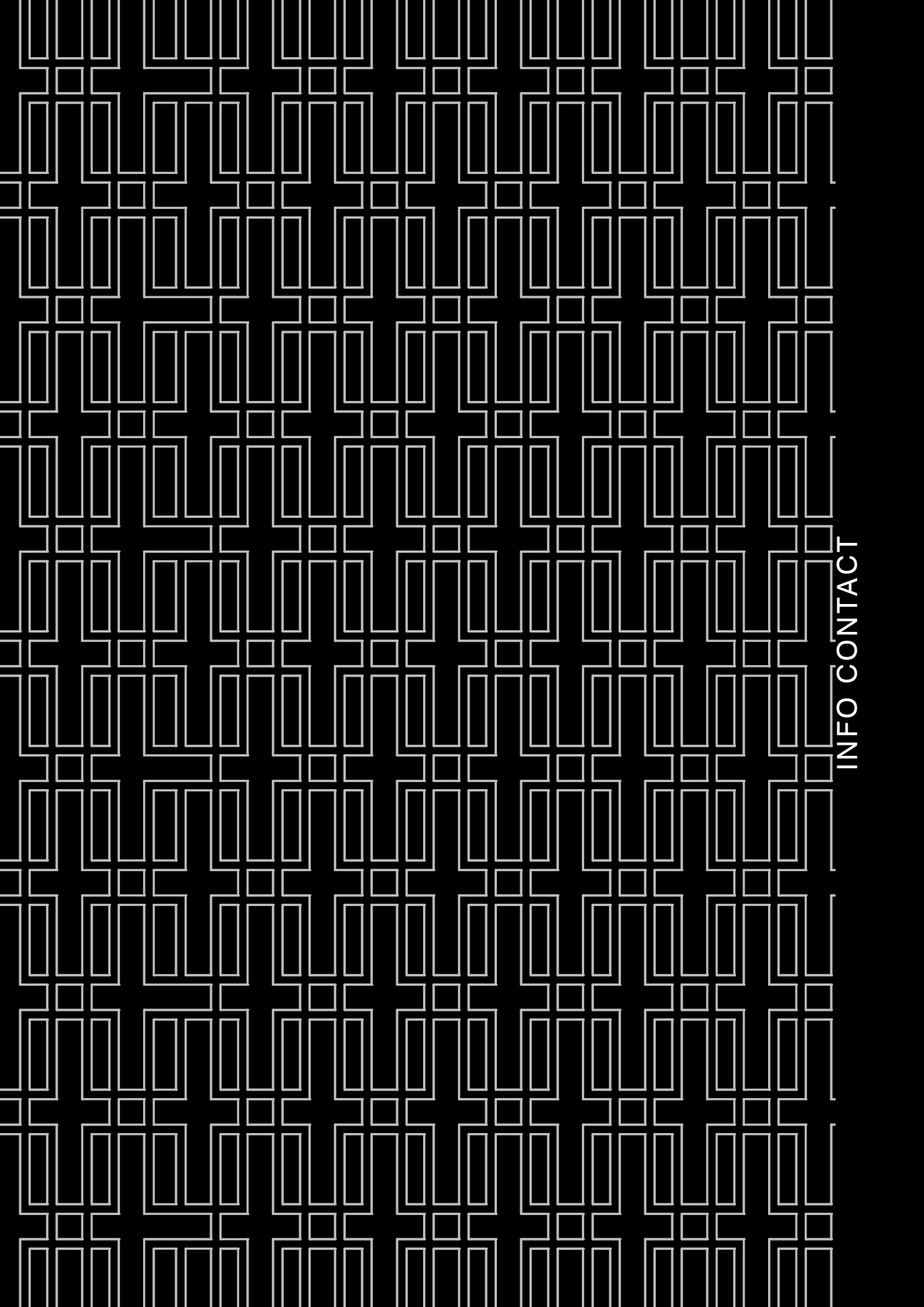


Casa Italiana



Guest





INFO CONTACT



\_ LONGO PALMARINI ARCHITECTURE &amp; PARTNERS

**Giovanni Longo**Italian society of engineers and architect \_ <http://inarcassa.it>Member of Italian Architect association no.10198 \_ <http://ordinearchitetti.mi.it/>Master Degree c/o Polytechnic University of Milan \_ <http://www.polimi.it/>**Alessandro Palmarini**Italian society of engineers and architect \_ <http://inarcassa.it>Member of Italian Architect association no.11396 \_ <http://ordinearchitetti.mi.it/>Master Degree c/o Polytechnic University of Milan \_ <http://www.polimi.it/>*All LPArchitecture Partners are registered under the Italian Construction Authority**All LPArchitecture Partners are registered under the French Construction Authority**Professional Indemnity Insurance Lloyd's broker code 801/WLM - N. cover note/binder 17691P11*

---

Via dell'Aprica 12  
20158 Milan  
Italy

[www.lparchitecture.it](http://www.lparchitecture.it) | [info@lparchitecture.it](mailto:info@lparchitecture.it)

t. +39 02 66823786

f. +39 02 60856360